

JESUS IS BORN

LUKE 2:1-7

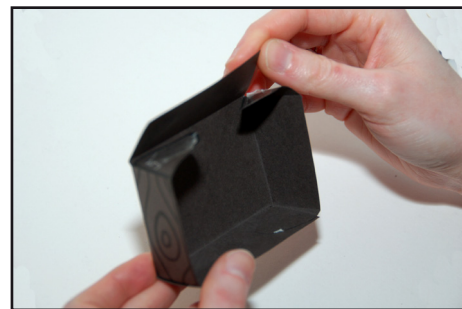


YOU WILL NEED:

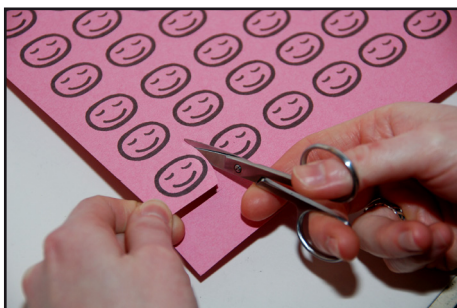
- TEMPLATE 1 PRINTED ONTO BROWN CARD
- TEMPLATE 2 PRINTED ONTO SKIN-COLOURED CARD
- HAY OR STRAW
- GLUE
- SCISSORS
- PAPER PLATE
- DOUBLE-SIDED TAPE OR TAPE
- COTTON PAD



STEP 1: CUT OUT CRADLE FROM TEMPLATE 1



STEP 2: FOLD IT ALONG THE DOTTED LINES AND STICK IT INTO A BOX SHAPE USING THE FLAPS. USE TAPE OR DOUBLE-SIDED TAPE



STEP 3: CUT OUT A FACE FROM TEMPLATE 2



STEP 4: CUT THE SIDES OFF A ROUND COTTON PAD



STEP 5: SQUISH THE HAY OR STRAW INTO SOME GLUE ON A PAPER PLATE



**STEP 6: SCOOP IT UP AND PUSH IT INTO THE MANGER
TIP: WASH YOUR HANDS AT THIS POINT**



STEP 7: STICK COTTON PAD ON TOP OF THE STRAW



STEP 8: STICK BABY'S FACE ON THE TOP OF THE COTTON PAD

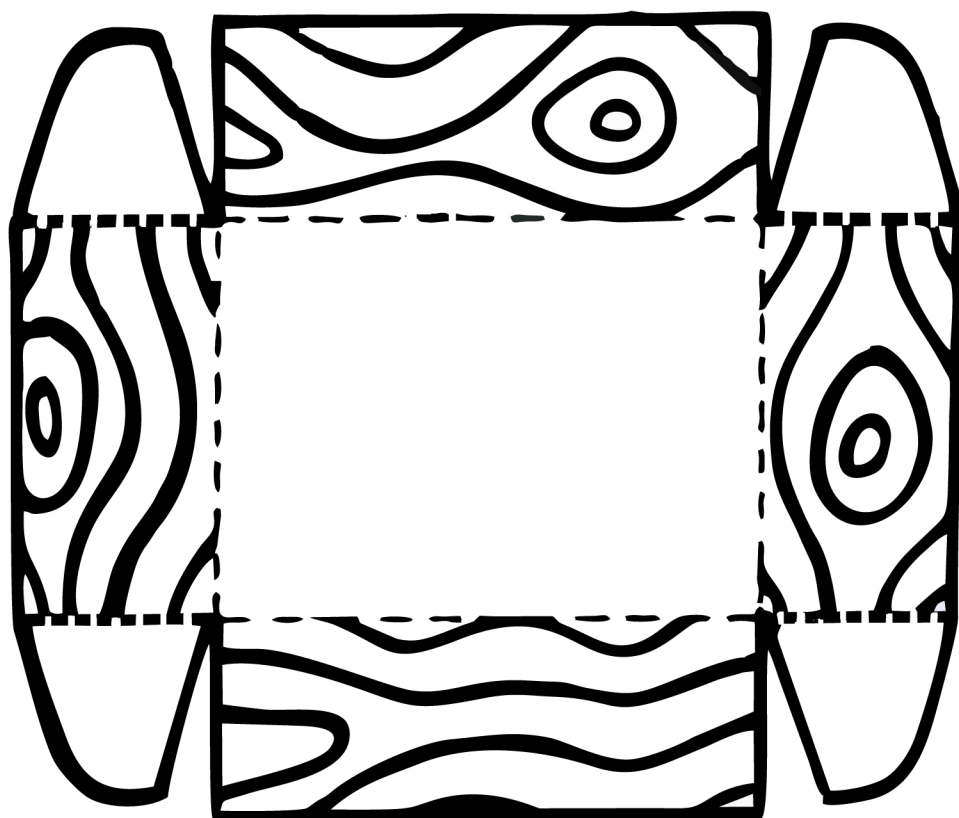
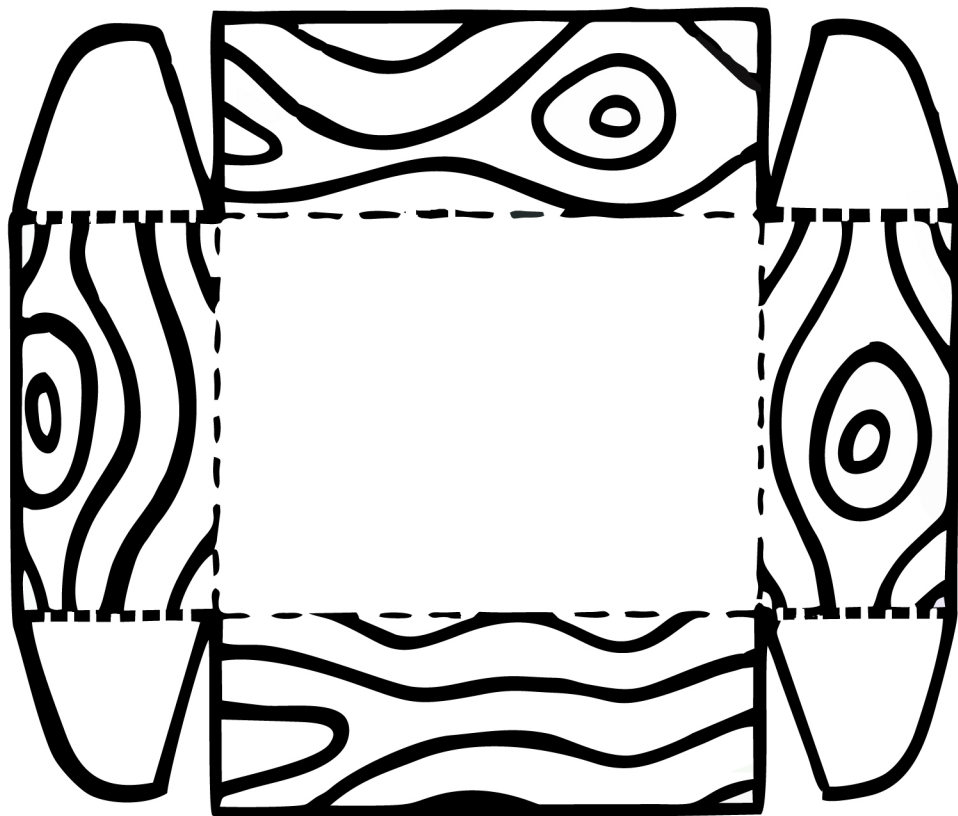


**FOR A SHORTER SESSION:
PREPARE STEPS 1 AND 3**

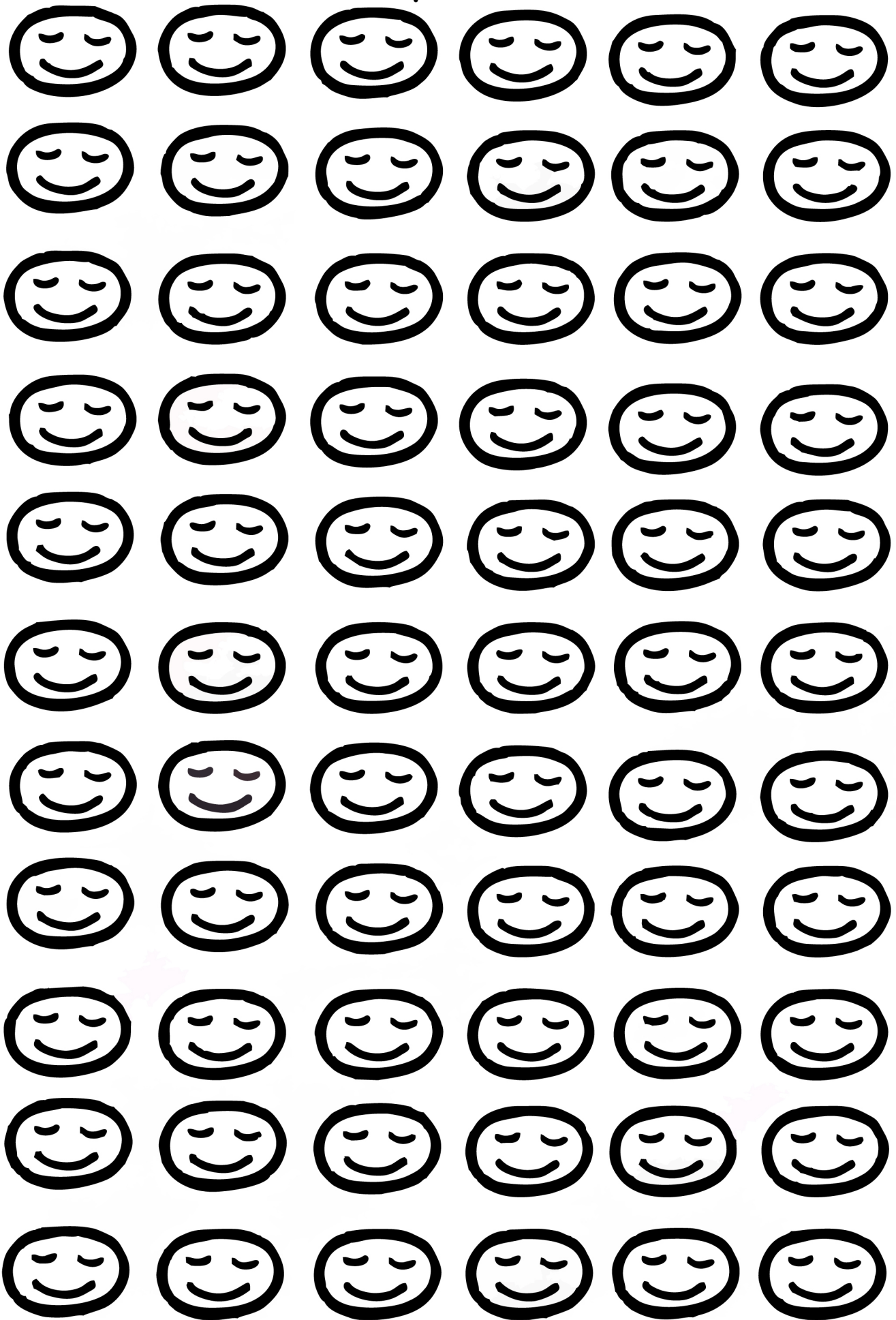


**GOD CAME
DOWN FROM
HEAVEN TO
EARTH TO
BECOME ONE OF
US AND SAVE US**

Template 1



Template 2



NATIVITY LUKE 2:1-7

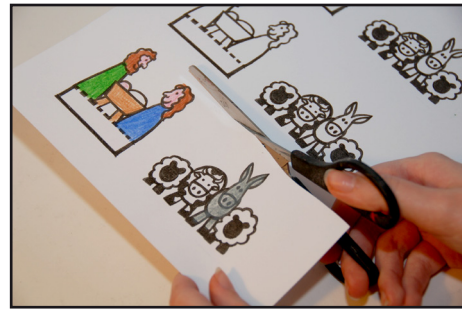


YOU WILL NEED:

- TEMPLATE 1 PRINTED ONTO WHITE CARD
- TEMPLATE 2 PRINTED ONTO BROWN CARD
- SCISSORS
- COLOURED PENCILS OR FELT TIPS
- DOUBLE-SIDED TAPE OR TAPE



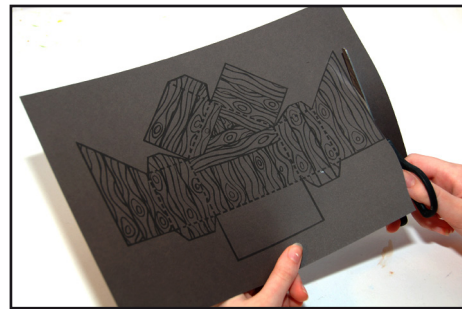
STEP 1: COLOUR IN TEMPLATE 1



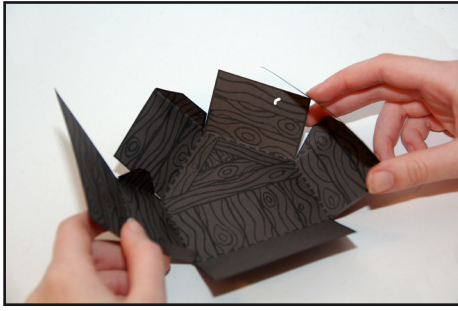
STEP 2: CUT OUT FIGURES AND ANIMALS



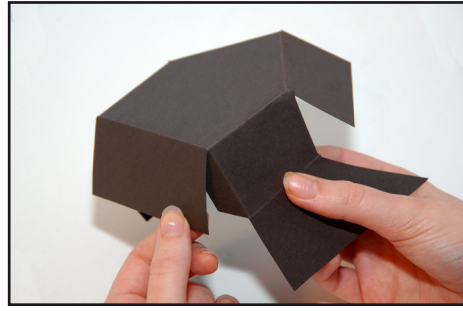
STEP 3: FOLD TAB ALONG DOTTED LINE ON FIGURES



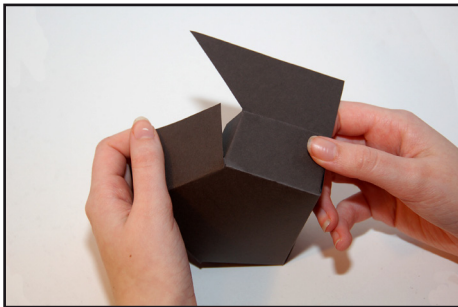
STEP 4: CUT OUT TEMPLATE 2



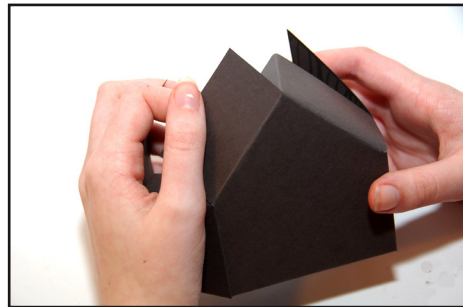
**STEP 5: FOLD TEMPLATE 2
ALONG DOTTED LINES**



**STEP 6: STICK BOTTOM TO SIDE
USING FLAP**



**STEP 7: STICK ROOF TO SIDE US-
ING FLAP**



**STEP 8: JOIN TWO SIDES OF
ROOF TOGETHER USING FLAP**



**STEP 9: STICK ANIMALS IN THE
BACK OF THE STABLE**



**STEP 10: STICK FIGURES ON THE
FLOOR OF THE STABLE USING
THE FLAP**

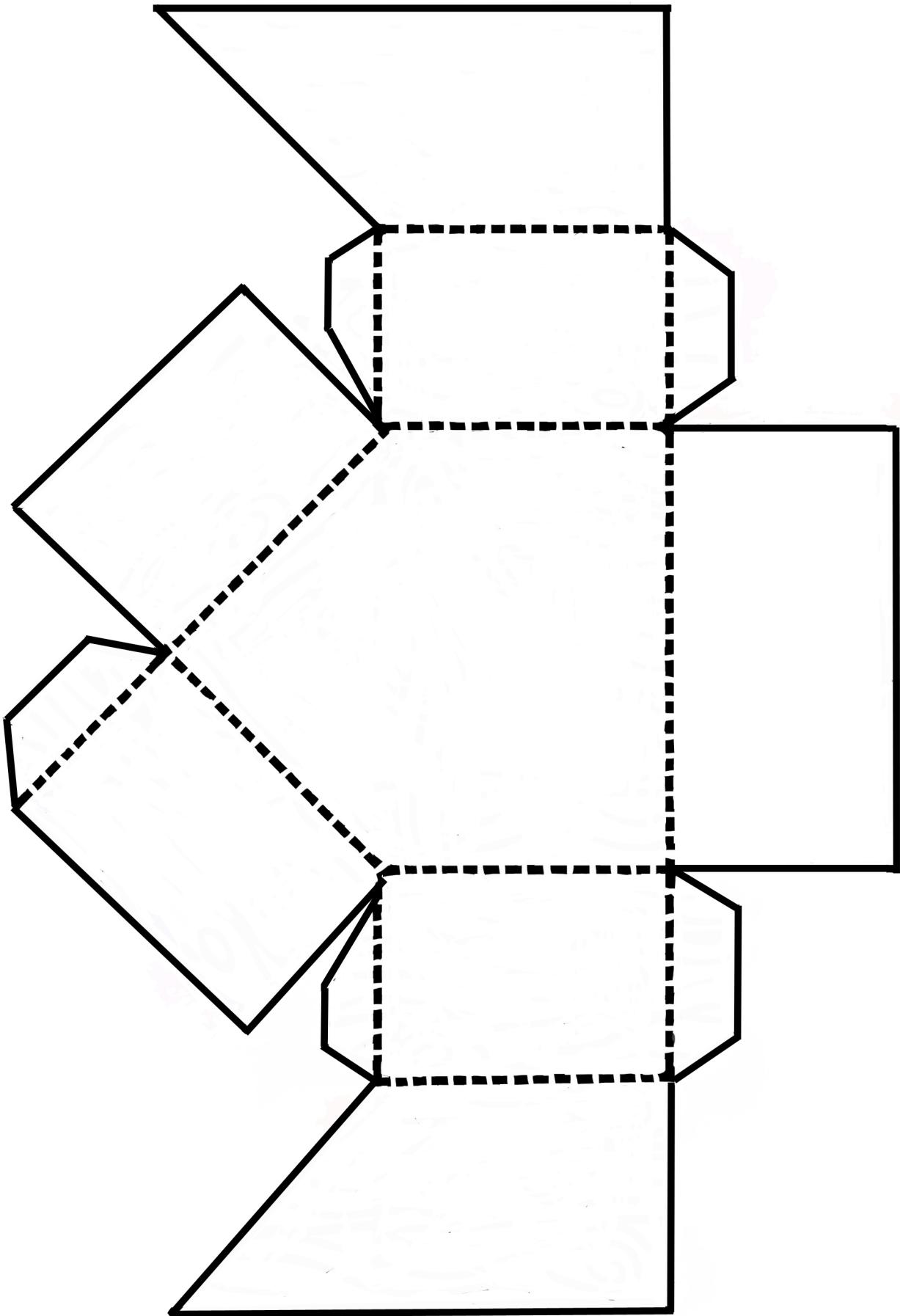


**FOR A SHORTER SESSION:
PREPARE STEPS 2 AND 4**



**JESUS CAME INTO
THE WORLD TO
SAVE US AND TO
KNOW WHAT IT'S
LIKE TO BE HUMAN**

Template 1



Template 2

