

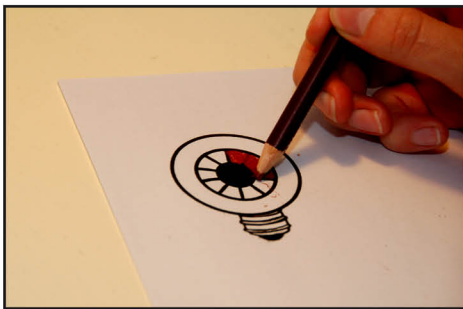
# THE EYE IS THE LAMP OF THE BODY

**MATTHEW 6:22-23**

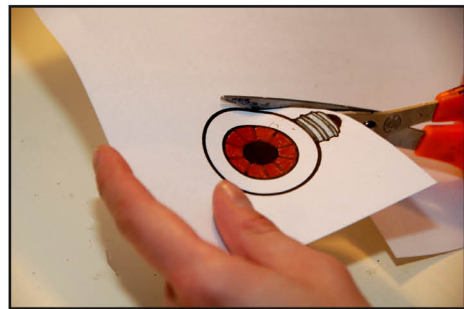


## YOU WILL NEED:

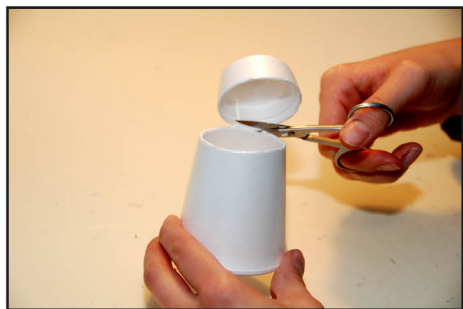
- WHITE POLYSTYRENE CUP
- EYE TEMPLATE PRINTED ONTO PAPER
- PAINT
- YARN
- WHITE GLUE
- TAPE
- SCISSORS
- COLOURED PENCILS OR FELT TIPS
- TOILET ROLL OR KITCHEN ROLL
- SPONGE OR PAINTBRUSH



**STEP 1; COLOUR IN EYE TEMPLATE**



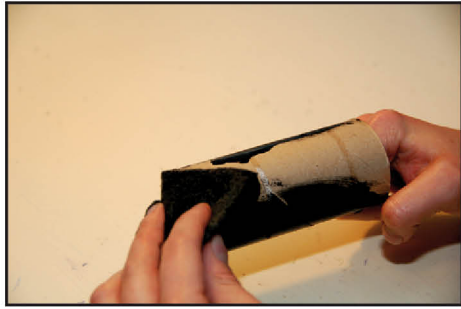
**STEP 2; CUT OUT EYE TEMPLATE**



**STEP 3: CUT OFF BOTTOM OF POLYSTYRENE CUP**



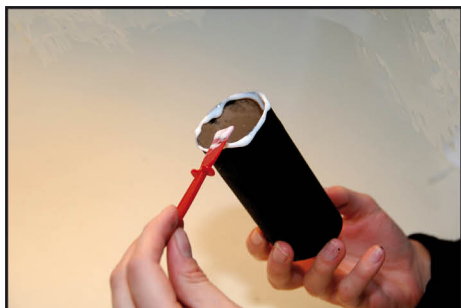
**STEP 4: STICK EYE ONTO UPSIDEDOWN CUP**



STEP 5: PAINT ROLL



STEP 6: TAPE YARN ONTO INSIDE OF THE POLYSTYRENE CUP SO THAT SOME IS HANGING DOWN



STEP 7: GLUE THE TOP OF THE TOILET ROLL OR KITCHEN ROLL



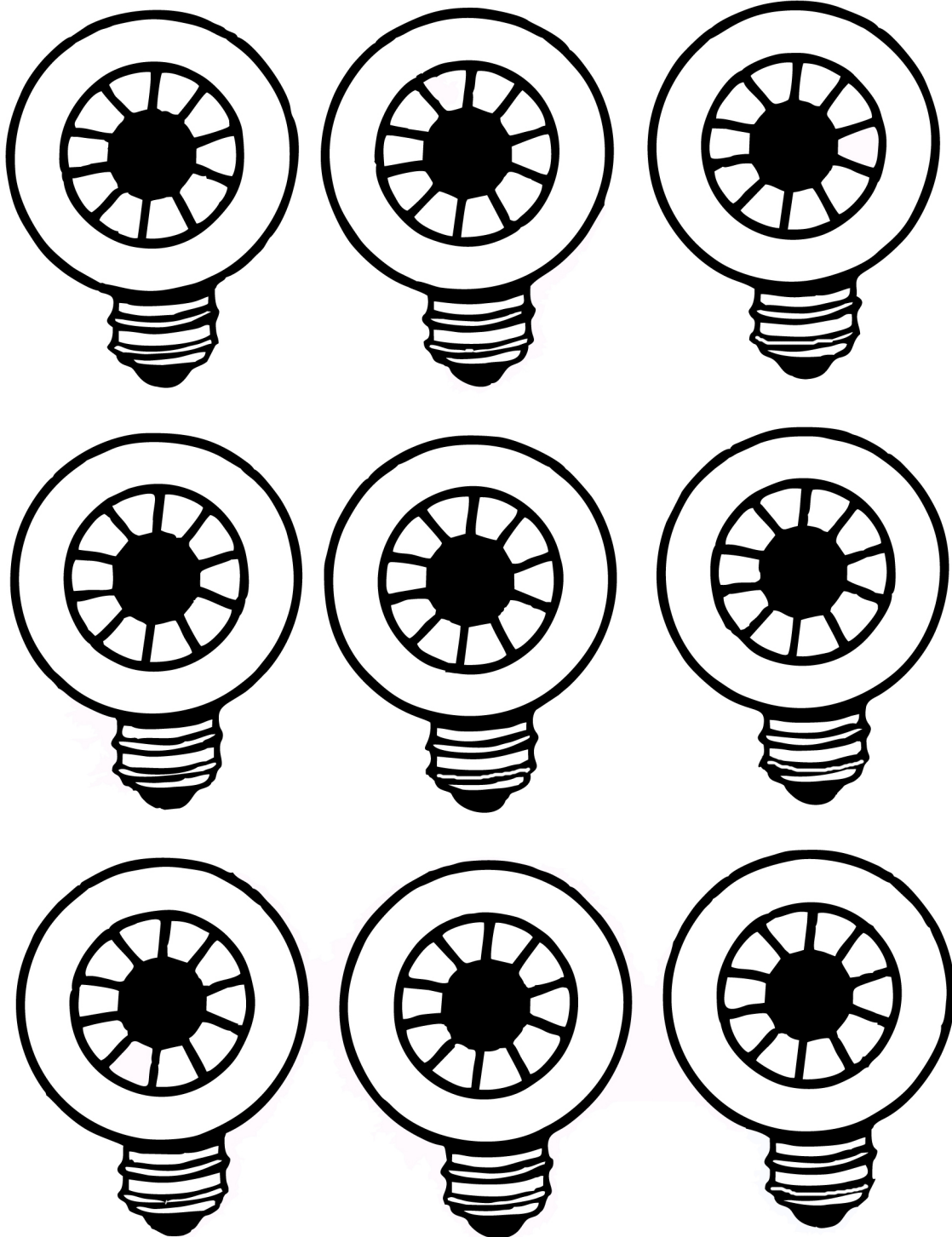
STEP 8: PUSH THE POLYSTYRENE CUP ONTO THE TOILET ROLL



FOR A SHORTER SESSION:: PREPARE STEP 6



WHAT WE LOOK AT  
HAS AN EFFECT ON US,  
SO WE NEED TO BE  
CAREFUL WHAT WE  
SEE AND WHAT WE  
THINK ABOUT



# PEARL OF GREAT PRICE

MATTHEW 13:45-46



## YOU WILL NEED:

- PLASTIC MILK BOTTLE
- SCISSORS
- TWIST TIES OR YARN
- WHITE GLUE
- TISSUE PAPER
- PLASTICINE OR AIR DRYING CLAY
- PLASTIC PEARL



STEP 1: CUT OFF TWO CORNERS OF PLASTIC MILK BOTTLE



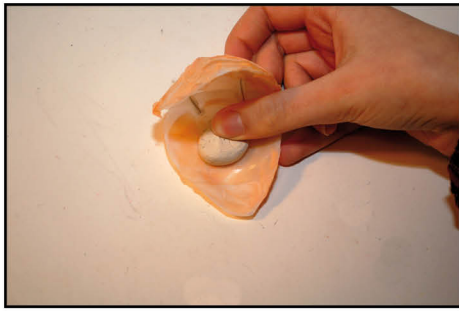
STEP 2: MAKE TWO HOLES ON THE BACK OF EACH CORNER



STEP 3: USE TWIST TIES OR YARN TO TIE THE TWO CORNERS TOGETHER



STEP 4: GLUE TISSUE PAPER ONTO EACH CORNER

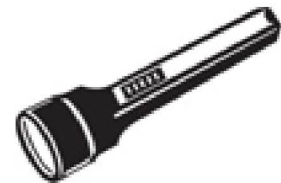


**STEP 5: STICK PLASTICINE OR CLAY INSIDE THE SHELL SHAPE**



**STEP 6: EMBED PEARL INTO CLAY**

KNOWING GOD IS  
THE MOST PRECIOUS  
THING IN THE WORLD,  
AND IT'S MORE  
IMPORTANT THAN  
ANYTHING ELSE



**FOR A SHORTER SESSION: PREPARE STEP 1 AND 2  
FOR A SHORTER SESSION STILL: PREPARE STEP 3**