

TREASURE CHEST



COVER A BOX WITH A LID WITH BROWN TISSUE PAPER.
INSIDE, MAKE TREASURE OUT OF TIN FOIL, PAPER AND JEWELS
IDEAL BOXES: EGG BOXES, TAKE-AWAY CARTONS OR TEA BOXES

TREASURE CHEST

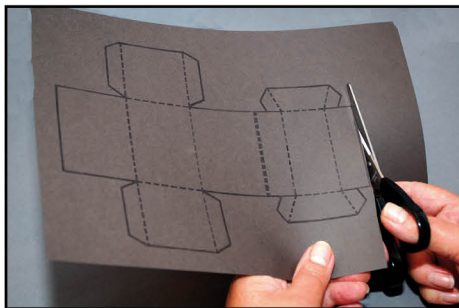


YOU WILL NEED:

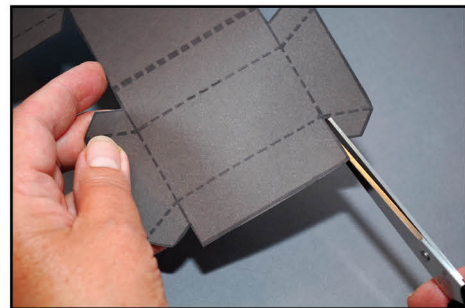
- TEMPLATE PRINTED ONTO BROWN CARD
- SCISSORS
- DOUBLE-SIDED TAPE



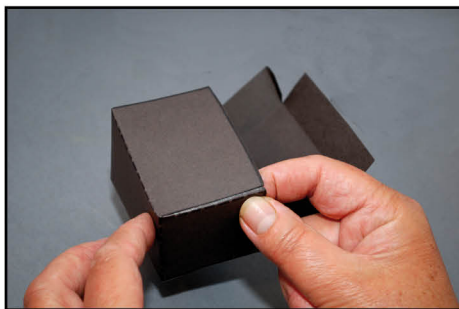
FOR A SHORTER SESSION:
PRECUT TEMPLATE



STEP 1: CUT OUT TEMPLATE 1



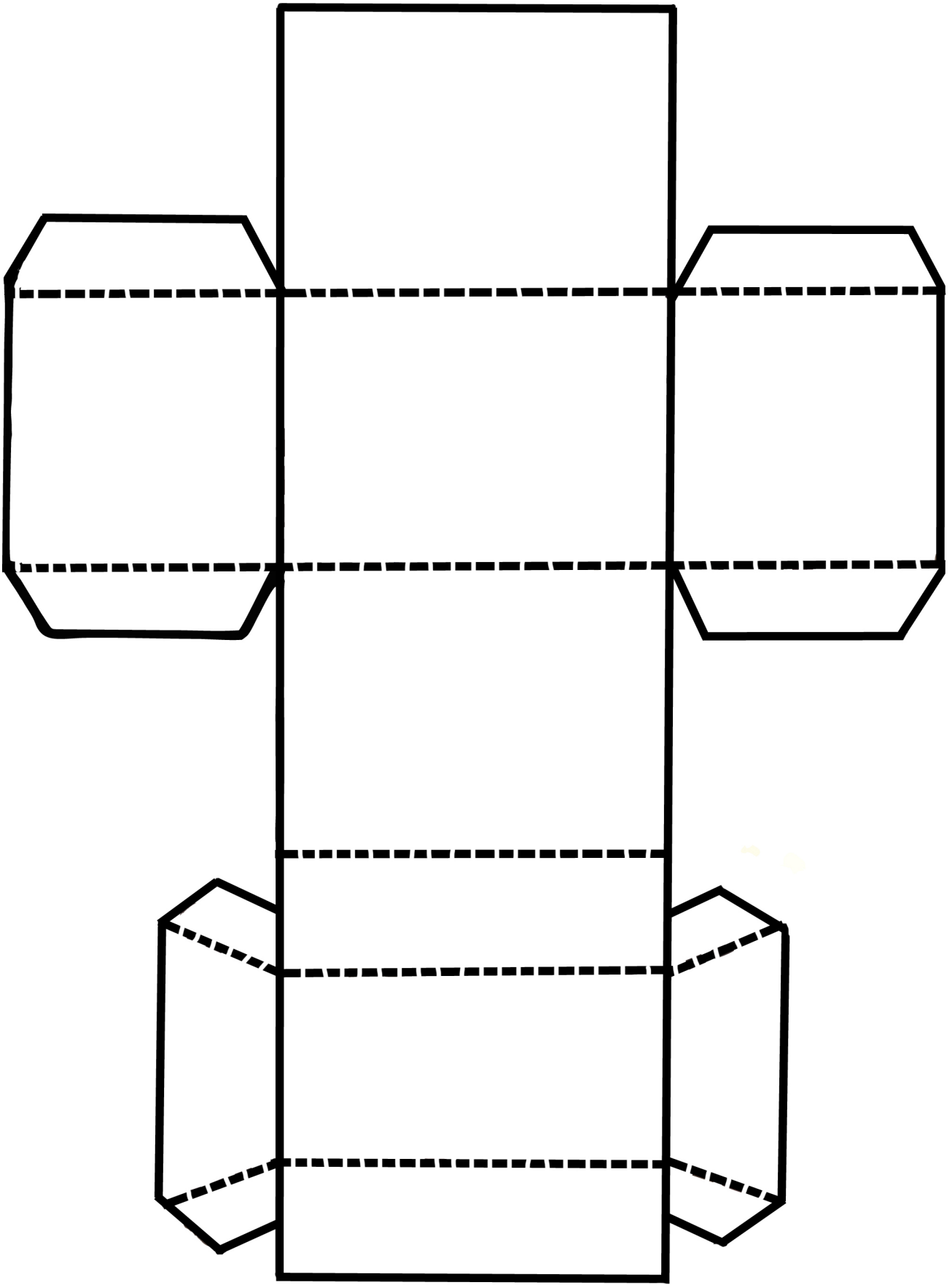
STEP 2: CUT INTO THE FLAPS ON
THE LID



STEP 3: STICK THE FLAPS INTO A
BOX



STEP 4: USE THE FLAPS TO STICK
A LID

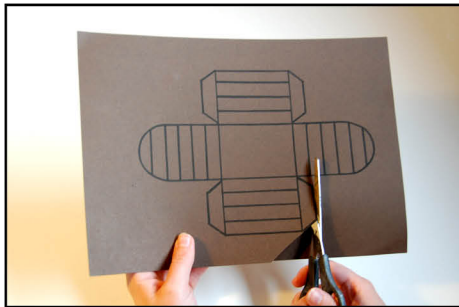


TREASURE CHEST



YOU WILL NEED:

- TEMPLATE 1 PRINTED ONTO BROWN CARD
- YELLOW PAPER
- HOLE PUNCH
- TWIST TIES, OR PIPE CLEANERS OR YARN
- ALUMINIUM FOIL
- SCISSORS
- BROWN PAINT
- SCISSORS



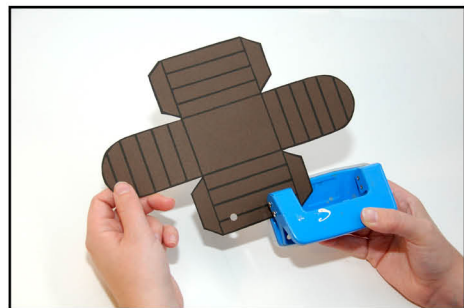
STEP 1: CUT OUT TEMPLATE 1



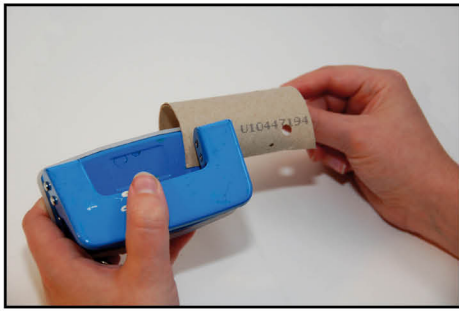
STEP 2: SLICE A TOILET ROLL VERTICALLY IN TWO



STEP 3: CUT THE TOILET ROLL TO THE SAME LENGTH AS THE BOX



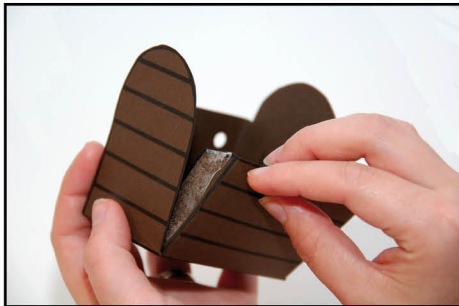
STEP 4: PUNCH HOLES IN MARKED AREAS ON TEMPLATE 1



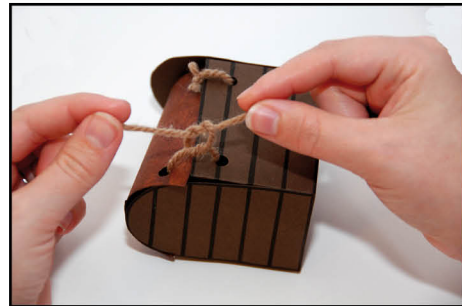
STEP 5: PUNCH TWO HOLES IN THE TOILET ROLL



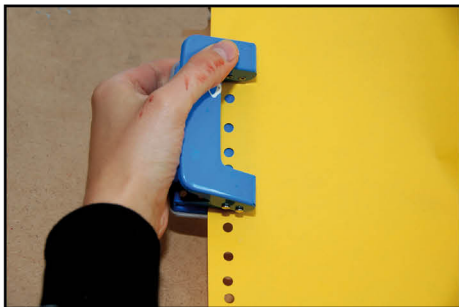
STEP 6: PAINT THE TOILET ROLL BROWN



STEP 7: FOLD TEMPLATE 1 ALONG THE DOTTED LINES AND STICK THE FLAPS TOGETHER TO MAKE A BOX



STEP 8: TIE THE TOILET ROLL ONTO THE BOX THROUGH THE HOLES, USING A TWIST TIE, PIPE CLEANERS OR YARN



STEP 9: MAKE COINS BY PUNCHING YELLOW PAPER AND EMPTYING THE PUNCH



STEP 10: SCREW UP TIN FOIL AND STICK IT INTO THE BOX



STEP 11: STICK PAPER PUNCHES ONTO THE TIN FOIL



**FOR A SHORTER SESSION:
PREPARE TOILET ROLL
AND PUNCH HOLES**

